



US Army Corps of Engineers  
BUILDING STRONG®

# Hurricane Ida Advisory #9

For Planning Purposes Only!

WASHINGTON, DC  
12:33:42  
28 Aug 2021

CHICAGO  
11:33:42  
28 Aug 2021

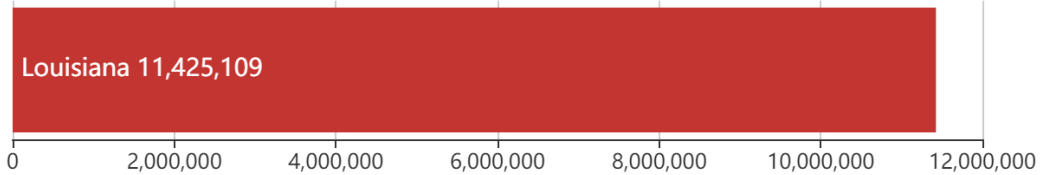
LOS ANGELES  
09:33:42  
28 Aug 2021

<https://go.usa.gov/xFJpP>

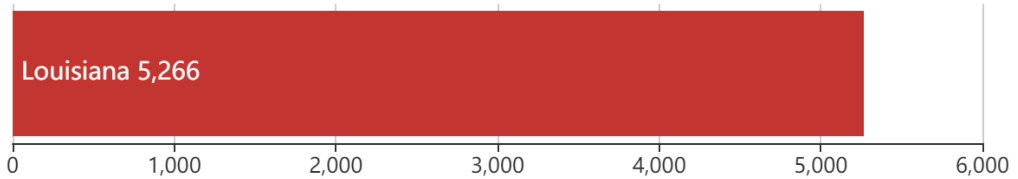
Updated as of 28 Aug 2021 (11:33 AM Central Daylight Time)

## Debris

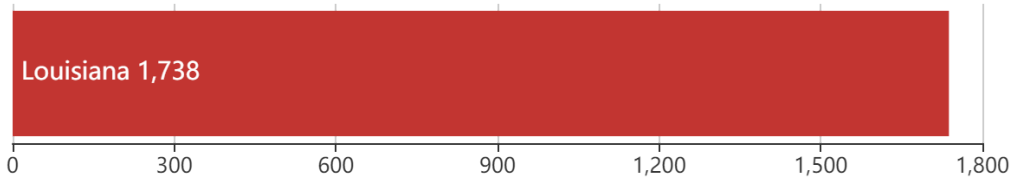
11.4M  
cu. yd.



Est. Temp. Roofing  
5.3K  
units

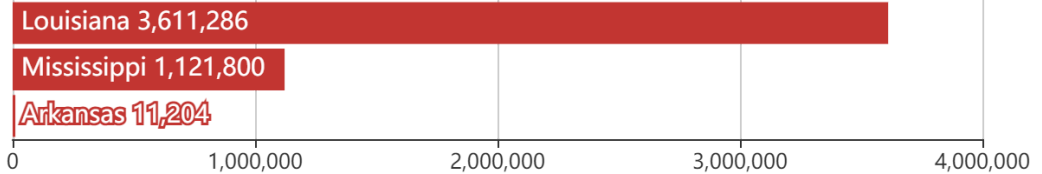


Act. Temp. Roofing  
1.7K  
units



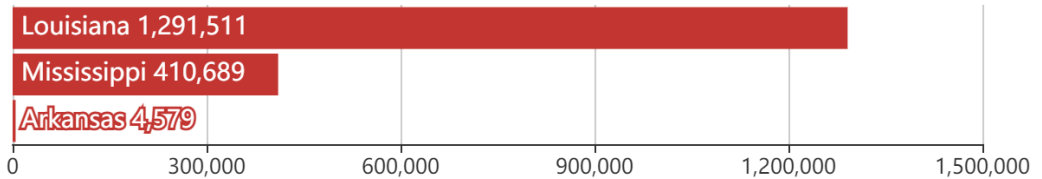
## Population

4.7M  
people



## Households

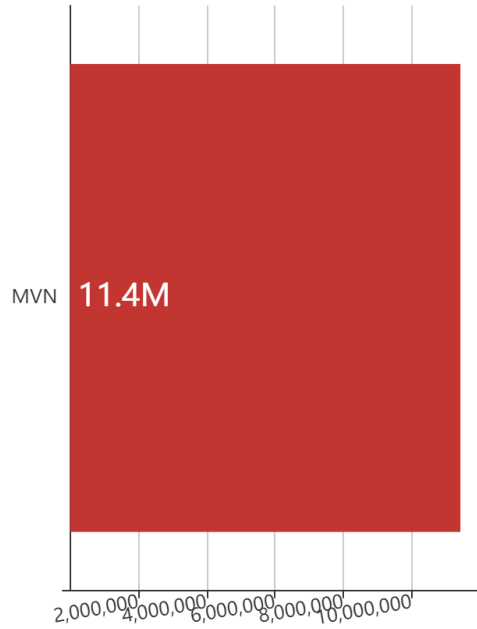
1.7M  
households



## Mission Model Summary

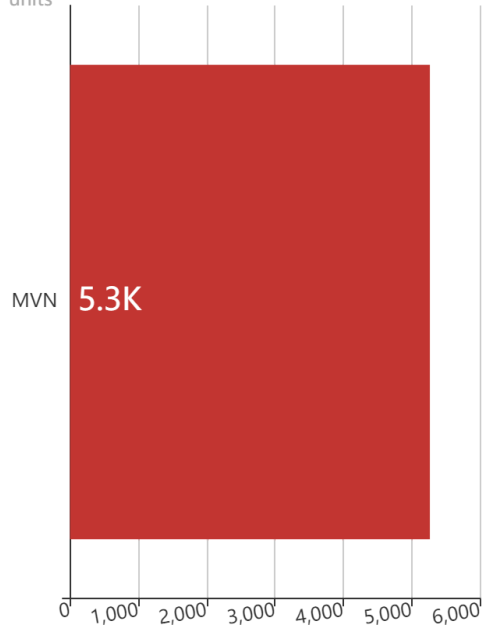
### Debris By USACE District

cu. yd.

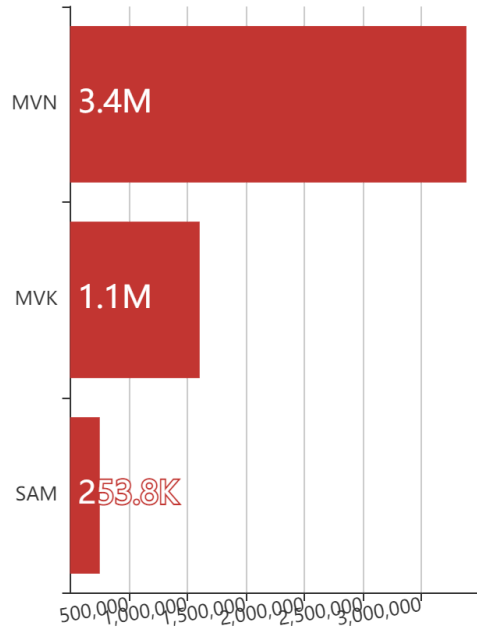


### Est. Temp. Roofing By USACE District

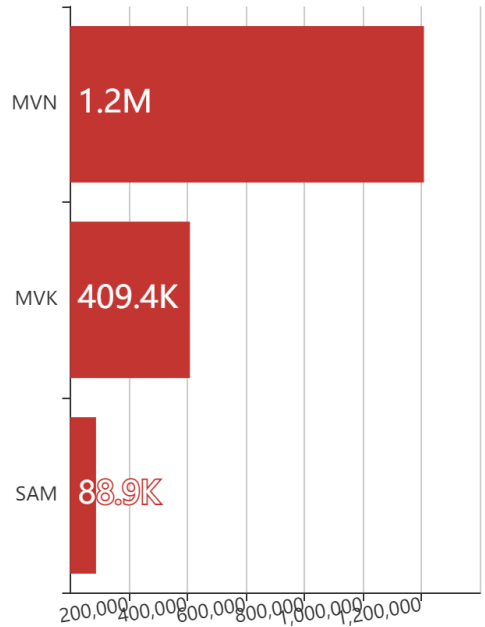
units



### Population By USACE District



### Households By USACE District



## Critical Infrastructure Summary

### Total

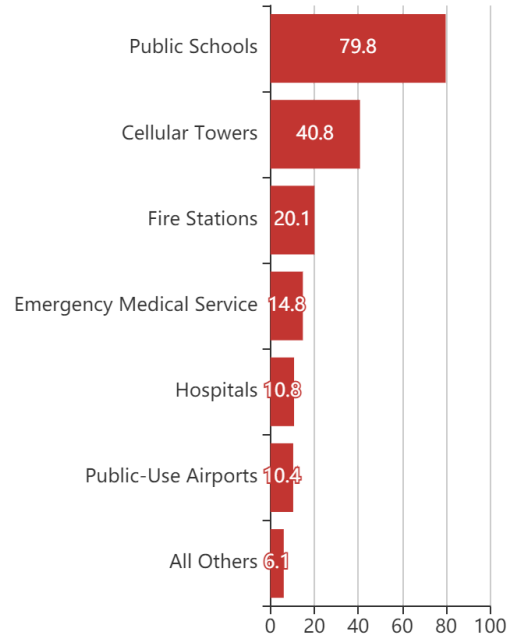


### Power Requirements



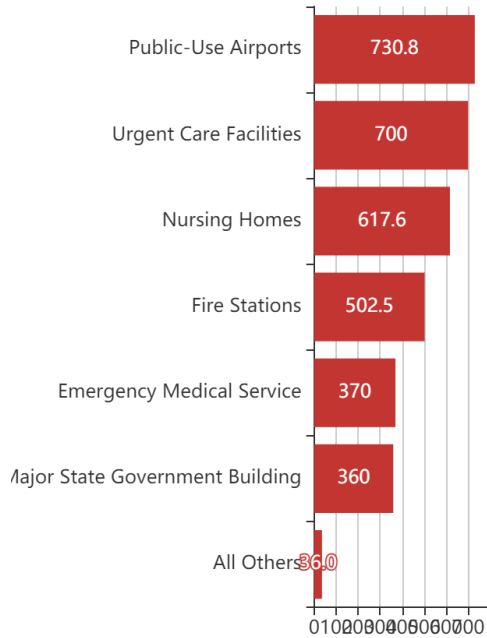
### Generators

By Generator Count



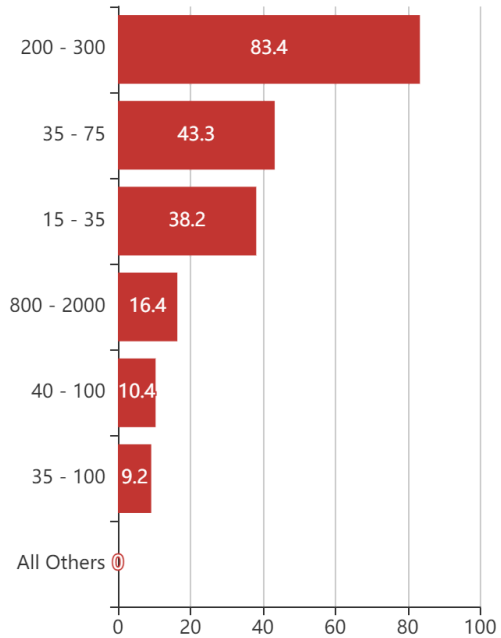
### Generators

By Power Requirement



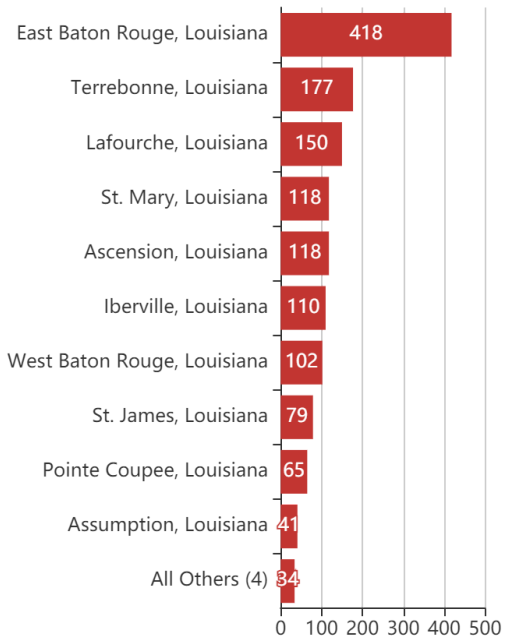
### Generators

By Range



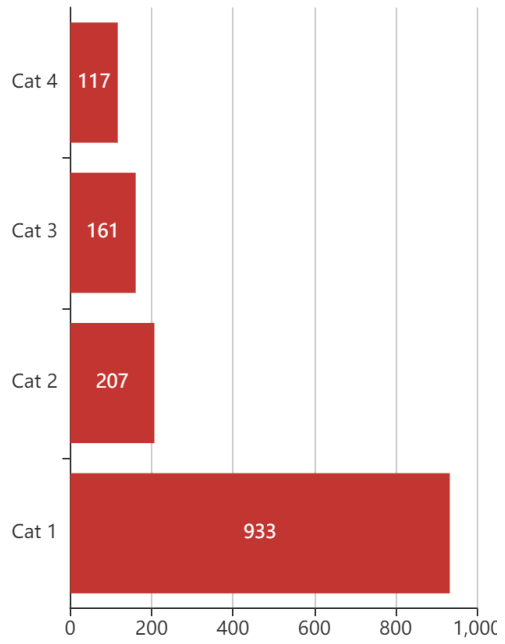
### Structures

By County



### Structures

By Intensity





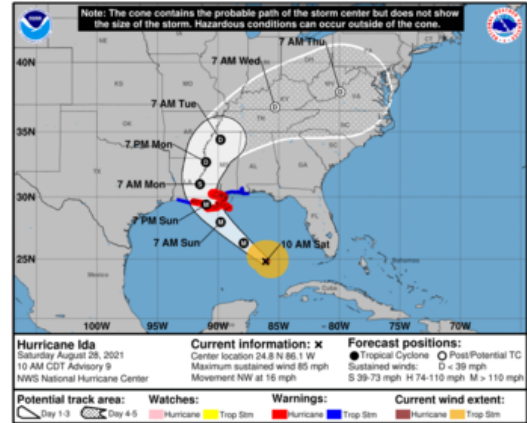
# Key Messages for Hurricane Ida

## Advisory 9: 10:00 AM CDT Sat Aug 28, 2021

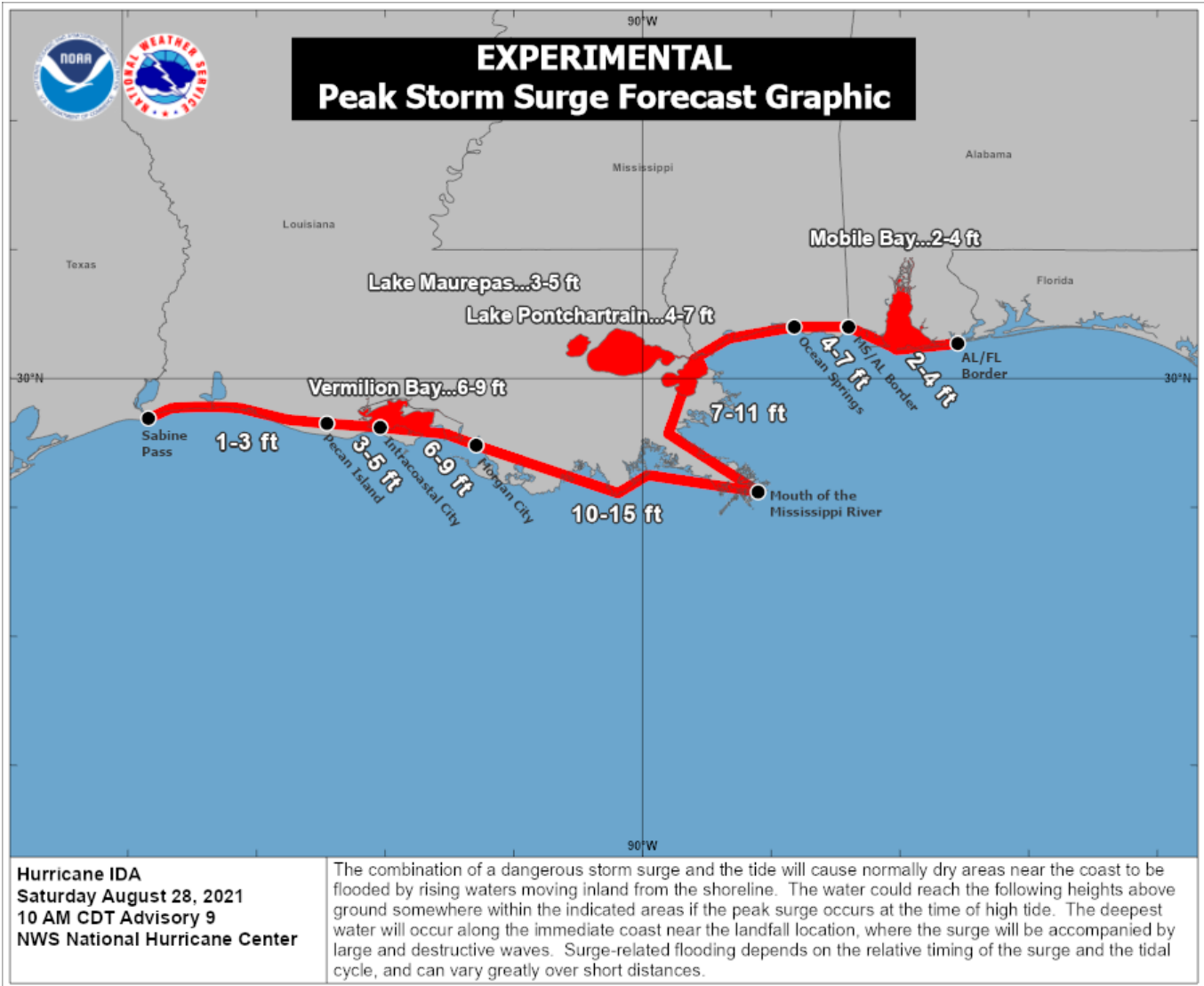
1. There is a danger of life-threatening storm surge inundation Sunday along the coasts of Louisiana and Mississippi within the Storm Surge Warning area. Extremely life-threatening inundation of 9 feet or greater above ground level is possible somewhere within the area from Morgan City, Louisiana, to the coast of Mississippi. Overtopping of local levees outside of the Hurricane and Storm Damage Risk Reduction System is possible where local inundation values may be higher. Interests throughout the warning area should follow any advice given by local officials.

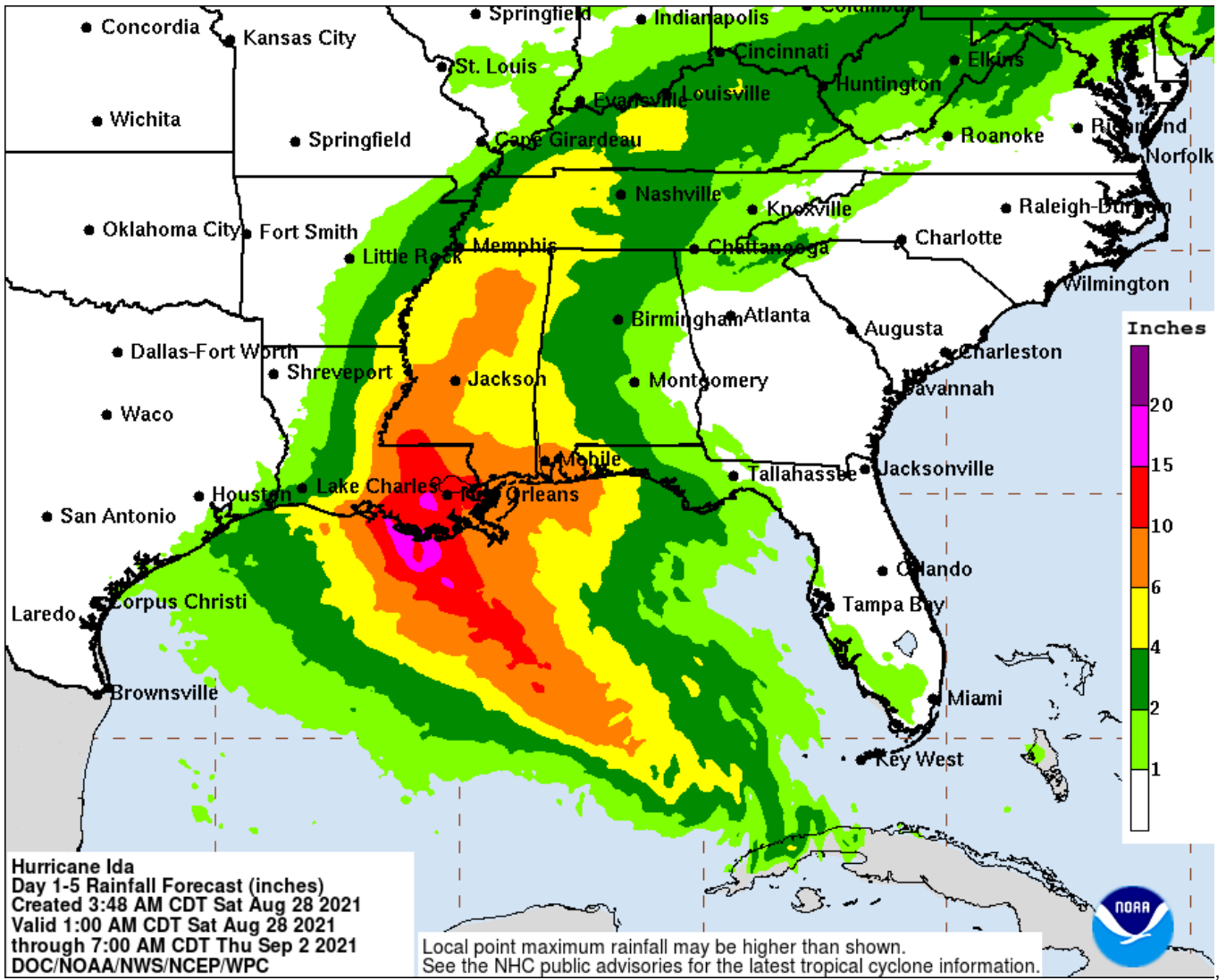
2. Ida is expected to be an extremely dangerous major hurricane when it reaches the coast of Louisiana. Hurricane-force winds are expected Sunday in portions of the Hurricane Warning area along the Louisiana coast, including metropolitan New Orleans, with potentially catastrophic wind damage possible where the core of Ida moves onshore. Actions to protect life and property should be rushed to completion today in the warning area.

3. Ida is likely to produce heavy rainfall Sunday and Monday across the central Gulf Coast from southeast Louisiana to coastal Mississippi, resulting in life-threatening flash and urban flooding and significant river flooding impacts. As Ida moves inland, significant flooding impacts are likely across portions of the Lower Mississippi and Tennessee Valleys Monday and Tuesday.

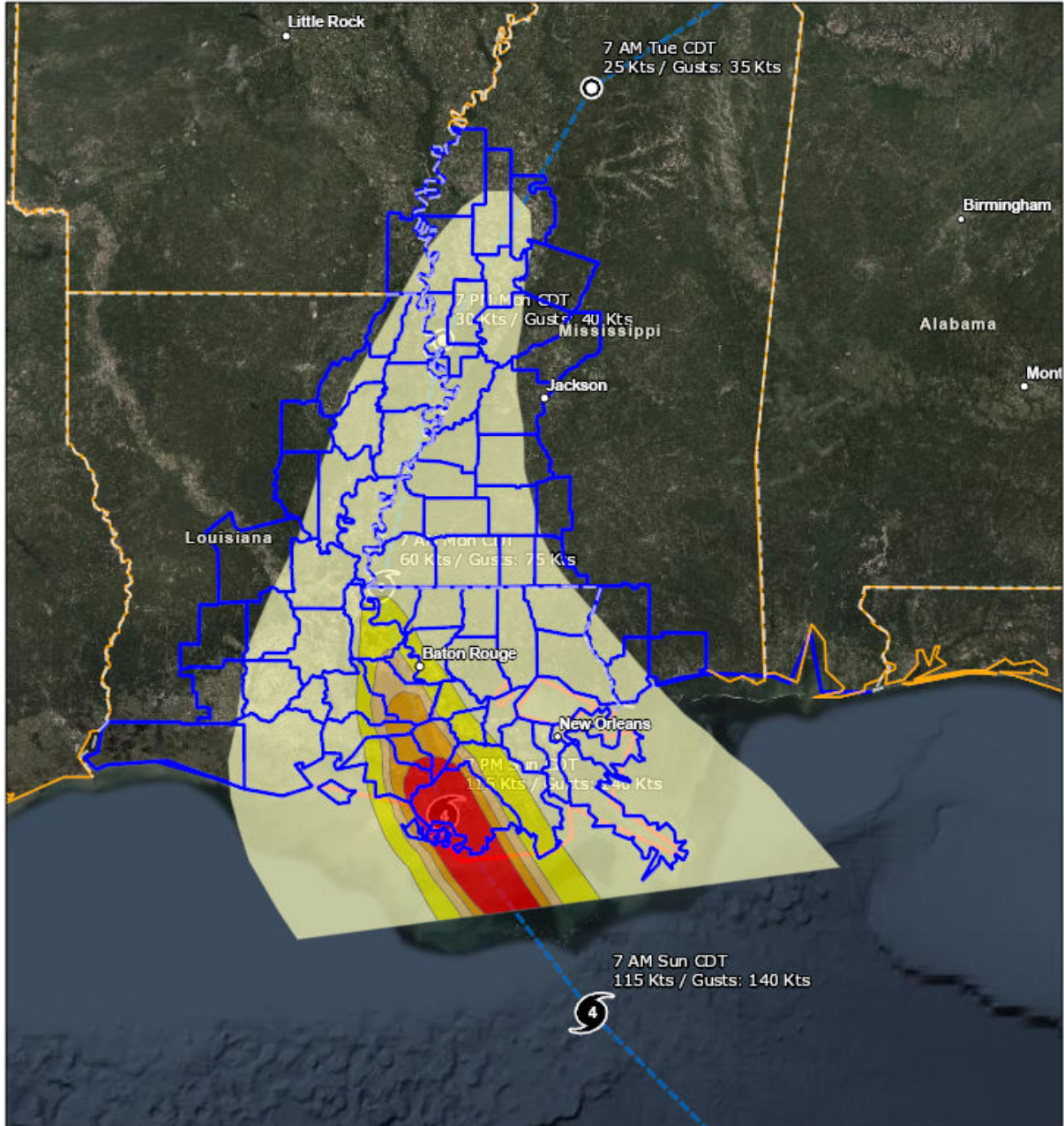


For more information go to [hurricanes.gov](https://hurricanes.gov)

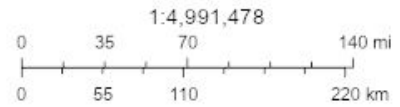








- ▬ Counties
- State Boundaries
- Mission Model Swaths
  - TS
  - Cat 1
  - Cat 2
  - Cat 3
  - Cat 4
- Tropical Cyclone Observed Surface Wind Swath
  - Observed (Best Track) Winds  $\geq$  34 knots (39 mph)
  - Observed (Best Track) Winds  $\geq$  50 knots (58 mph)
  - Observed (Best Track) Winds  $\geq$  64 knots (74 mph)
- Observed (Best Track) Track Line
- ◉ Observed (Best Track) Center Position

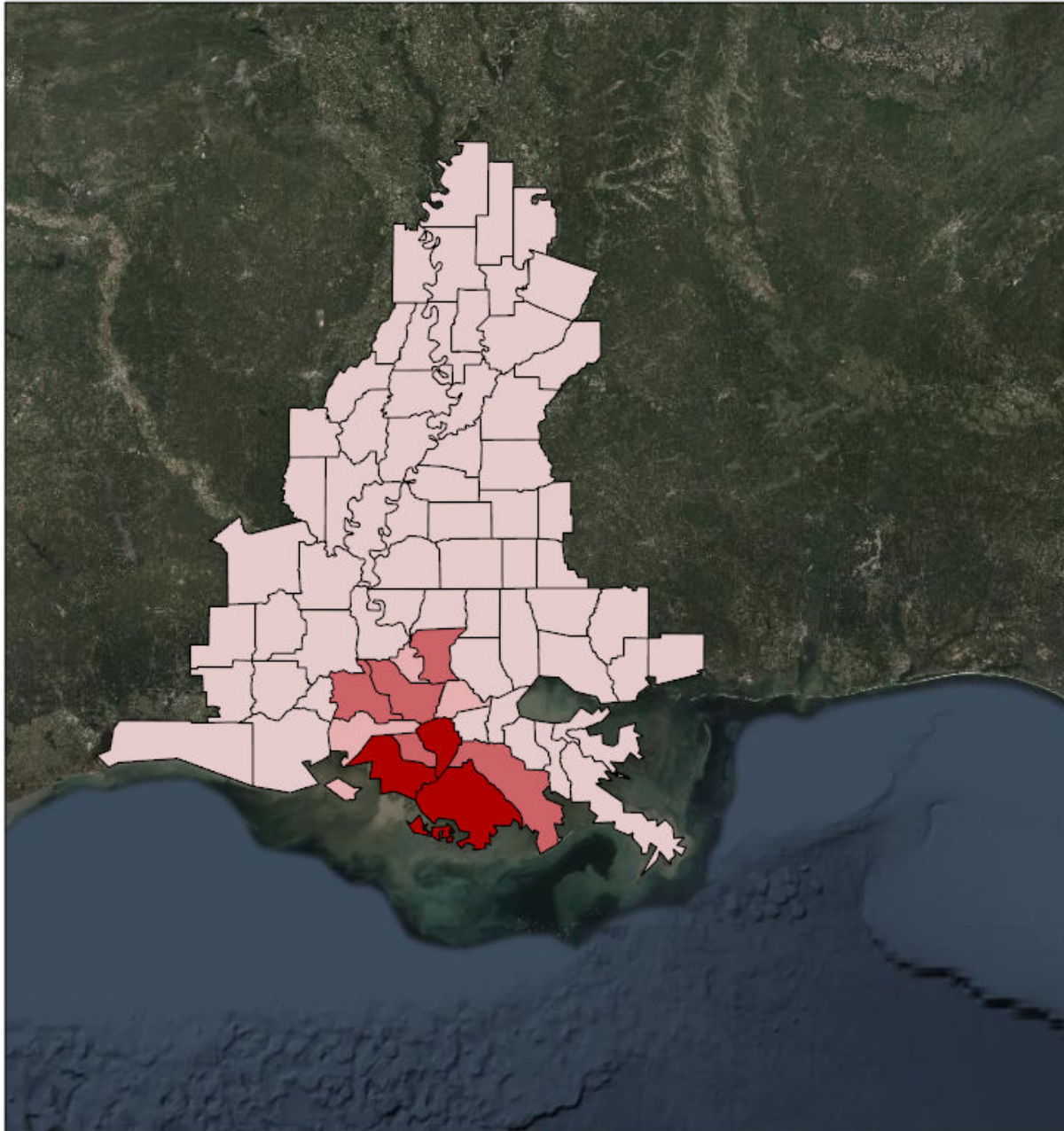


Source: NOAA, Esri, NOAA/NOS/OCS nowCOAST, NOAA/NWS/NHC, NOAA/NWS/CPHC, Esri, HERE, Garmin, FAO, NOAA, USGS, EPA, Source: Esri, DigitalGlobe, GeoEye, Earthstar Geographics, CNES/Airbus DS, USDA, USGS, AeroGRID, IGN, and the GIS User Community



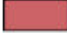
Created by SimSuite

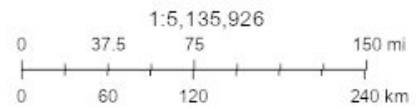


# Debris



## Debris

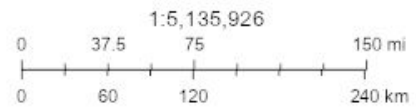
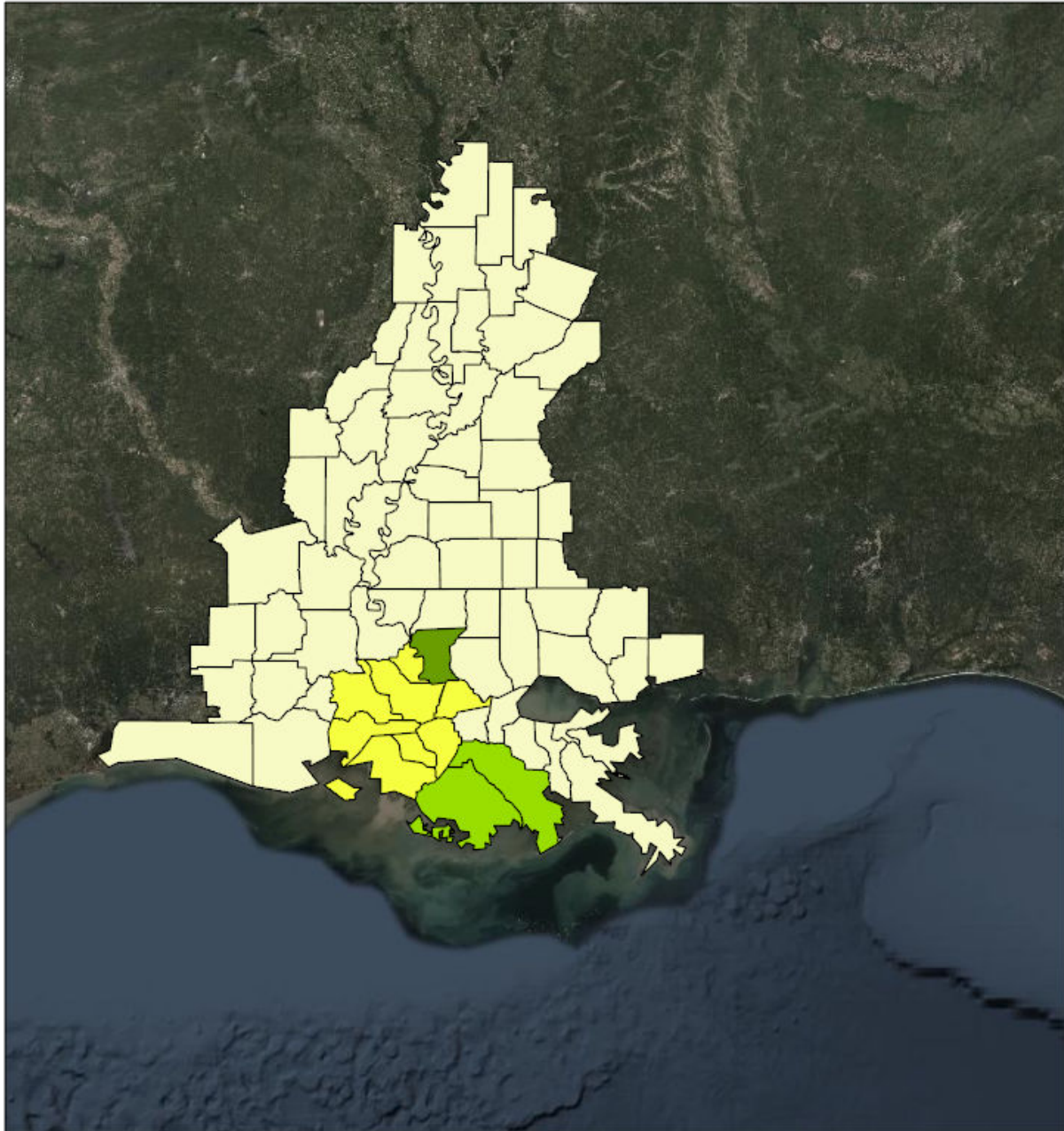
-  < 100,000 cubic yards
-  100,000 - 249,000 cubic yards
-  250,000 - 499,999 cubic yards



Source: Esri, DigitalGlobe, GeoEye, Earthstar Geographics, CNES/Airbus DS, USDA, USGS, AeroGRID, IGN, and the GIS User Community

Created by SimSuite

# Est. Temp. Roofing

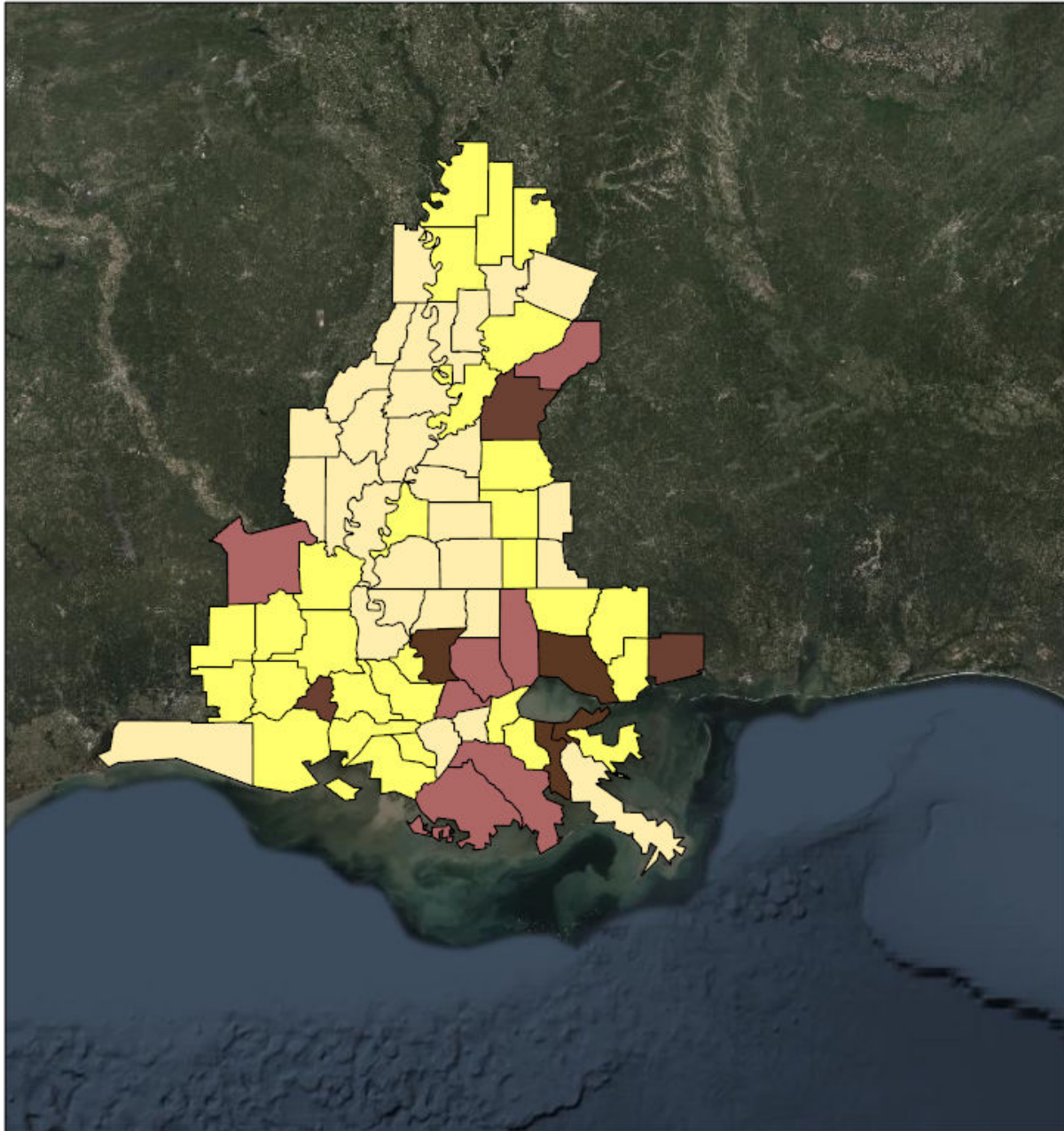


Source: Esri, DigitalGlobe, GeoEye, Earthstar Geographics, CNES/Airbus DS, USDA, USGS, AeroGRID, IGN, and the GIS User Community



Created by SimSuite

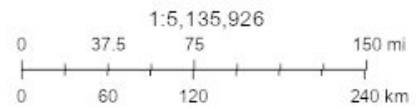


# Population



## Population

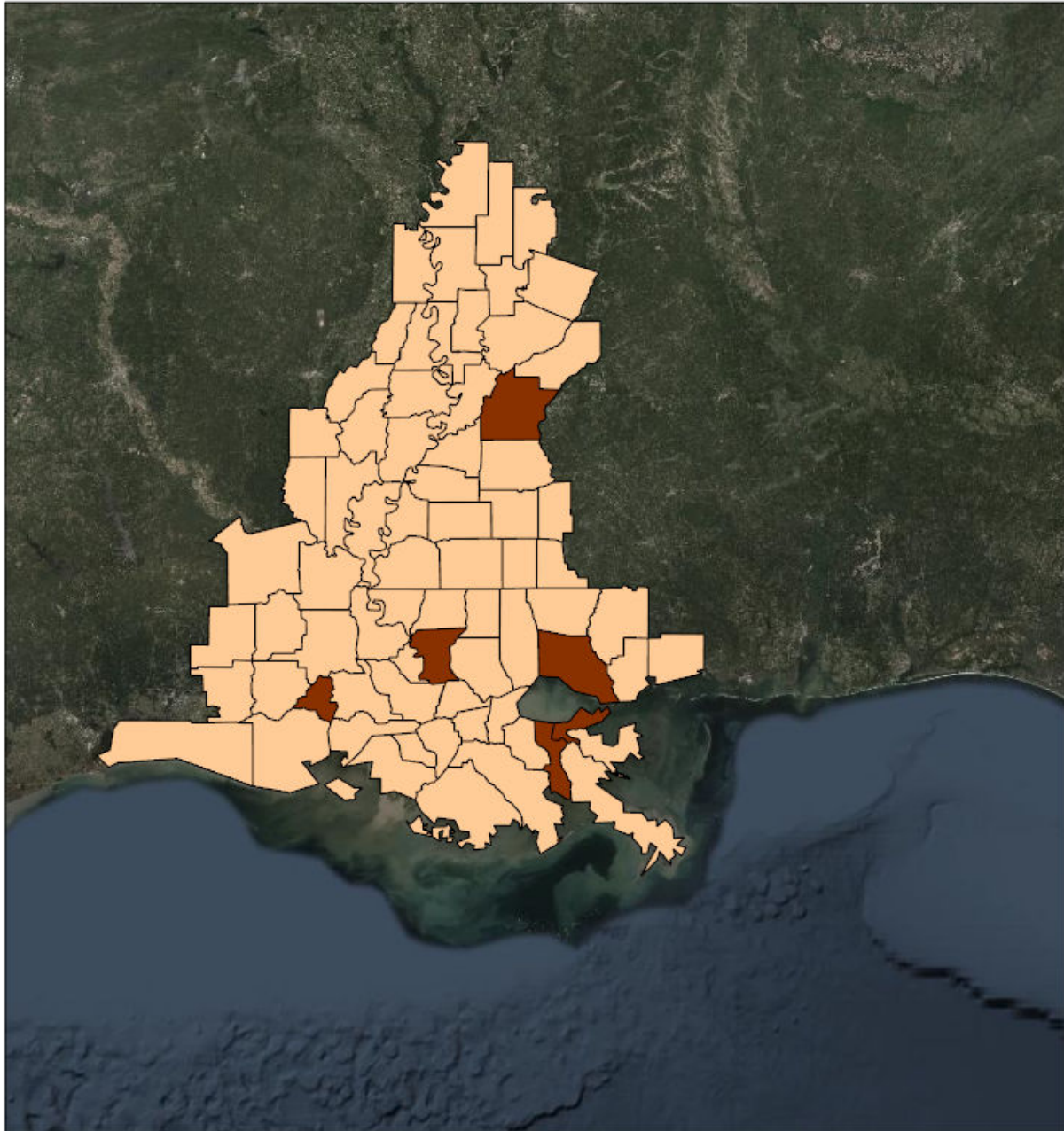
-  < 25,000 persons
-  25,000 - 99,000 persons
-  100,000 - 174,999 persons
-  175,000 - 249,000 persons



Source: Esri, DigitalGlobe, GeoEye, Earthstar Geographics, CNES/Airbus DS, USDA, USGS, AeroGRID, IGN, and the GIS User Community

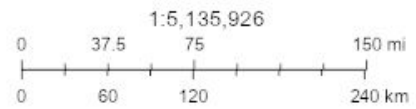
Created by SimSuite

# Households



## Households

- < 7,500 Households
- 15,000 - 24,999 Households
- 25,000 - 49,999 Households



Source: Esri, DigitalGlobe, GeoEye, Earthstar Geographics, CNES/Airbus DS, USDA, USGS, AeroGRID, IGN, and the GIS User Community

Created by SimSuite

## Mission Summary



The mission models account for storm surge and wind damage only, but do not account for other related storm hazards that may affect the mission estimates.

Mission Summary	
Total Counties	72
Debris (cu. yd.)	11,425,109
Est. Temp. Roofing (units)	5,266
Act. Temp. Roofing (units)	1,738
Population	4,744,290
Households	1,706,779

Population Distribution	
Tropical Storm	3,364,999
Category 1	444,782
Category 2	96,867
Category 3	80,454
Category 4	99,845

ARKANSAS	Yds of Debris (0)	Est. Roof Units (0)	Act. Roof Units (0)	Population (11,204)	Households (4,579)
Chicot	0	0	0	11,204	4,579

LOUISIANA	Yds of Debris (11,425,109)	Est. Roof Units (5,266)	Act. Roof Units (1,738)	Population (3,611,286)	Households (1,291,511)
Acadia	0	0	0	64,233	22,841
Allen	0	0	0	27,184	8,516
Ascension	139,328	423	139	124,274	37,790
Assumption	1,083,491	325	107	24,326	8,736
Avoyelles	0	0	0	43,493	15,432
Caldwell	0	0	0	10,242	3,905
Cameron	0	0	0	7,408	2,575
Catahoula	0	0	0	10,384	3,834
Concordia	0	0	0	20,789	7,613
East Baton Rouge	394,147	1,331	439	455,183	172,057
East Carroll	0	0	0	7,690	2,552
East Feliciana	1,053	4	1	20,133	7,022
Evangeline	0	0	0	35,225	12,829
Franklin	0	0	0	21,409	7,904
Iberia	248,097	265	87	74,654	26,778
Iberville	326,916	398	131	34,675	11,072
Jefferson	0	0	0	436,044	169,647
Jefferson Davis	0	0	0	33,324	11,771
La Salle	0	0	0	15,517	5,468

Lafayette	0	0	0	249,487	87,027
Lafourche	265,004	503	166	102,036	35,486
Livingston	0	0	0	142,761	46,007
Madison	0	0	0	11,737	4,025
Orleans	0	0	0	378,952	142,158
Plaquemines	0	0	0	24,106	8,077
Pointe Coupee	30,221	97	32	22,931	9,082
Rapides	0	0	0	138,904	50,401
Richland	0	0	0	21,497	7,551
St. Bernard	0	0	0	42,016	13,221
St. Charles	0	0	0	55,762	18,557
St. Helena	0	0	0	11,008	4,333
St. James	28,929	99	33	22,785	7,717
St. John the Baptist	5,864	20	7	46,127	15,965
St. Landry	47	0	0	85,834	31,857
St. Martin	315,933	342	113	55,795	19,216
St. Mary	2,926,114	454	150	54,463	20,457
St. Tammany	0	0	0	259,212	87,521
Tangipahoa	0	0	0	133,414	45,135
Tensas	0	0	0	5,076	2,172
Terrebonne	5,494,965	665	219	116,998	40,091
Vermilion	0	0	0	61,784	21,889
Washington	0	0	0	48,152	18,113
West Baton Rouge	157,305	315	104	26,881	8,688
West Carroll	0	0	0	11,522	4,452
West Feliciana	7,696	27	9	15,859	3,971

<b>MISSISSIPPI</b>	<b>Yds of Debris (0)</b>	<b>Est. Roof Units (0)</b>	<b>Act. Roof Units (0)</b>	<b>Population (1,121,800)</b>	<b>Households (410,689)</b>
Adams	0	0	0	31,160	12,643
Amite	0	0	0	12,545	5,351
Bolivar	0	0	0	33,873	12,727
Claiborne	0	0	0	9,331	3,440
Copiah	0	0	0	29,484	10,708
Franklin	0	0	0	8,081	3,211
Hancock	0	0	0	48,810	17,380
Harrison	0	0	0	205,027	71,476
Hinds	0	0	0	243,165	91,351
Holmes	0	0	0	18,437	6,926
Humphreys	0	0	0	8,556	3,373
Issaquena	0	0	0	1,325	472
Jefferson	0	0	0	7,644	2,929
Lawrence	0	0	0	13,333	5,078
Leflore	0	0	0	31,148	11,577
Lincoln	0	0	0	35,319	13,296
Madison	0	0	0	107,968	35,829
Pearl River	0	0	0	56,827	20,816
Pike	0	0	0	40,438	15,370
Sharkey	0	0	0	4,786	1,834
Sunflower	0	0	0	26,622	8,822
Walthall	0	0	0	14,801	5,888
Warren	0	0	0	48,277	18,941
Washington	0	0	0	48,082	18,936
Wilkinson	0	0	0	9,239	3,455
Yazoo	0	0	0	27,522	8,860



## Critical Infrastructure

Summary			
Total Critical Facilities		1,418	
Power Requirements (kW)		51,031.9	
Range (kW)			
Communications	# FED Gen Req	Range (kW)	Req kW
AM Antennas (14)	0.7	35 - 75	38.5
Cellular Towers (68)	40.8	35 - 75	2,244.0
FM Antennas (36)	1.8	35 - 75	99.0
Education	# FED Gen Req	Range (kW)	Req kW
Private Schools (74)	0.0	200 - 300	0.0
Public Schools (266)	79.8	200 - 300	19,950.0
Colleges and Universities (40)	0.8	200 - 300	200.0
Emergency Services	# FED Gen Req	Range (kW)	Req kW
911 Call Centers (0)	0.0	15 - 35	0.0
Emergency Medical Service (148)	14.8	15 - 35	370.0
Fire Stations (201)	20.1	15 - 35	502.5
Service Providers (0)	0.0	0 - 0	0.0
Healthcare	# FED Gen Req	Range (kW)	Req kW
Nursing Homes (61)	9.2	35 - 100	617.6
Hospitals (36)	10.8	800 - 2000	15,120.0
Urgent Care Facilities (14)	2.8	200 - 300	700.0
Military	# FED Gen Req	Range (kW)	Req kW
Air National Guard (ANG) Sites (0)	0.0	15 - 35	0.0
Army National Guard (ARNG) Sites (10)	0.0	15 - 35	0.0
National Security Government Military Facilities (72)	0.0	15 - 35	0.0
Law Enforcement	# FED Gen Req	Range (kW)	Req kW
Prison Points (21)	4.2	400 - 600	2,100.0
Local Police (29)	2.9	15 - 35	72.5
State Police (4)	0.2	15 - 35	5.0
Correctional Facilities (0)	0.0	400 - 600	0.0
State and Local EOC	# FED Gen Req	Range (kW)	Req kW
Local Emergency Operations Centers (14)	2.8	15 - 40	77.0
State Emergency Operation Centers (EOCs) (1)	0.2	15 - 35	5.0

<b>State Facilities</b>	<b># FED Gen Req</b>	<b>Range (kW)</b>	<b>Req kW</b>
Governors Mansion (1)	0.0	100 - 200	0.0
Major State Government Building (24)	2.4	100 - 200	360.0

<b>Transportation</b>	<b># FED Gen Req</b>	<b>Range (kW)</b>	<b>Req kW</b>
Ports (154)	0.0	600 - 1200	0.0
Amtrak Stations (2)	0.0	100 - 300	0.0
Bus Stations (20)	0.0	100 - 300	0.0
Intermodal Terminal Facilities (6)	0.0	100 - 300	0.0
Railroad Stations (1)	0.0	100 - 300	0.0
Public-Use Airports (87)	10.4	40 - 100	730.8

<b>Water</b>	<b># FED Gen Req</b>	<b>Range (kW)</b>	<b>Req kW</b>
Water Treatment Facilities (0)	0.0	800 - 2000	0.0
Wastewater Treatment Plants (14)	5.6	800 - 2000	7,840.0

## COVID-19

#	County	Cases
1	Jefferson	65,340
2	East Baton Rouge	58,416
3	Orleans	43,361
4	St. Tammany	39,777
5	Lafayette	34,858
6	Harrison	28,793
7	Hinds	28,436
8	Livingston	22,291
9	Tangipahoa	20,978
10	Ascension	19,952
11	Rapides	18,539
12	Terrebonne	17,784
13	Lafourche	16,391
14	Madison	12,941
15	St. Landry	12,418
16	Iberia	11,197
17	Acadia	9,346
18	Vermilion	8,883
19	St. Charles	8,289
20	St. Mary	7,782
21	St. Martin	7,617
22	Pearl River	7,521
23	Washington	7,069
24	St. Bernard	6,351
25	Hancock	6,311
26	Avoyelles	6,247
27	Washington	6,198
28	Washington	6,198
29	Warren	5,870
30	St. John the Baptist	5,816
31	Bolivar	5,549
32	Iberville	5,446
33	Evangeline	5,044
34	Pike	4,797
35	Lincoln	4,731
36	East Feliciana	4,250
37	Leflore	4,163
38	Allen	4,145
39	Jefferson Davis	4,134

40	West Baton Rouge	4,130
41	Adams	3,947
42	Yazoo	3,883
43	Sunflower	3,850
44	Copiah	3,831
45	Franklin	3,714
46	Richland	3,559
47	Plaquemines	3,558
48	Pointe Coupee	3,522
49	Assumption	3,336
50	St. James	3,041
51	Concordia	2,792
52	Holmes	2,368
53	LaSalle	2,329
54	Madison	1,903
55	Lawrence	1,852
56	Walthall	1,826
57	Chicot	1,825
58	Amite	1,716
59	West Carroll	1,581
60	Catahoula	1,567
61	Caldwell	1,523
62	West Feliciana	1,409
63	East Carroll	1,399
64	St. Helena	1,226
65	Claiborne	1,192
66	Humphreys	1,127
67	Franklin	1,029
68	Wilkinson	925
69	Jefferson	819
70	Cameron	782
71	Sharkey	573
72	Tensas	434
73	Issaquena	184